

# RO VER GOLD G

CNC MACHINING CENTRE



# MINIMUM FOOTPRINT, MAXIMUM PERFORMANCE



## THE MARKET EXPECTS

a change in manufacturing processes which enables companies to **accept the largest possible number of orders**. This is coupled with the need to maintain high quality standards whilst offering product customisation with **quick and defined delivery times**, as well as responding to the needs of highly creative designers.

## BIESSE RESPONDS

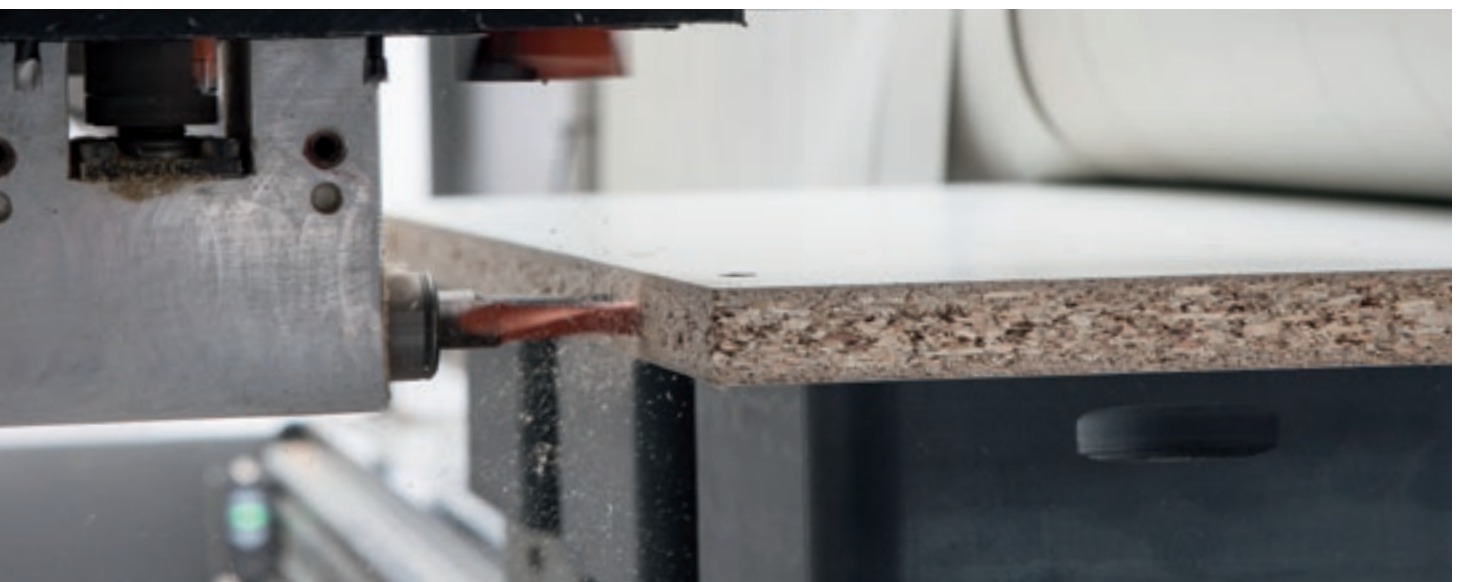
with **technological solutions** that influence and support technical expertise as well as process and material knowledge. **Rover Gold G** is an CNC machining centre designed for craftsmen who need to automate their production process as well as small-medium enterprises that specialise in custom made products.



# ROVER GOLD G

- ✓ A SINGLE PROCESSING CENTRE FOR THE MANUFACTURING OF SOLID WOOD AND PARTICLE BOARD FURNITURE
- ✓ CONSISTENT PROCESSING QUALITY OVER TIME
- ✓ PANEL AND WORK AREA CLEANING
- ✓ MAXIMUM OPERATOR SAFETY

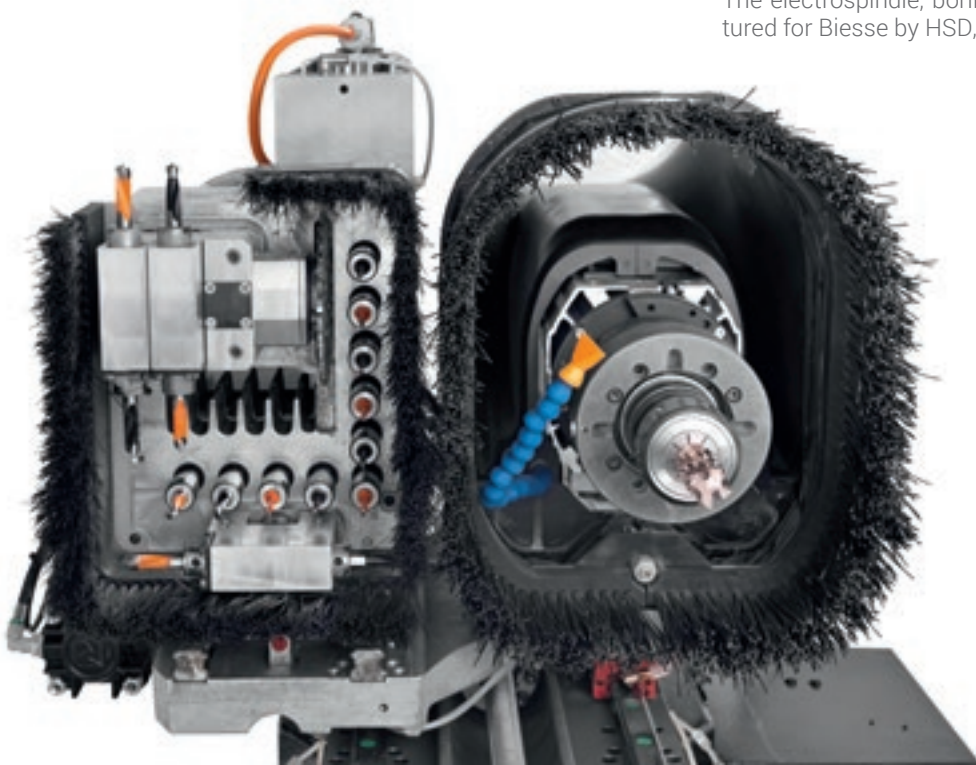
# A SINGLE PROCESSING CENTRE FOR THE MANUFACTURING OF SOLID WOOD AND PARTICLE BOARD FURNITURE



The components of Rover Gold G configurations are the same as those one used in higher-end solutions.



The electrospindle, boring head are designed and manufactured for Biesse by HSD, the global leader in this sector.



# REDUCED SET UP TIME

The Biesse work table is guaranteed to hold the work piece securely in place and ensures quick and easy tool changeover.



The innovative ATS work table boasts a universal design for superb flexibility and easy configuration.



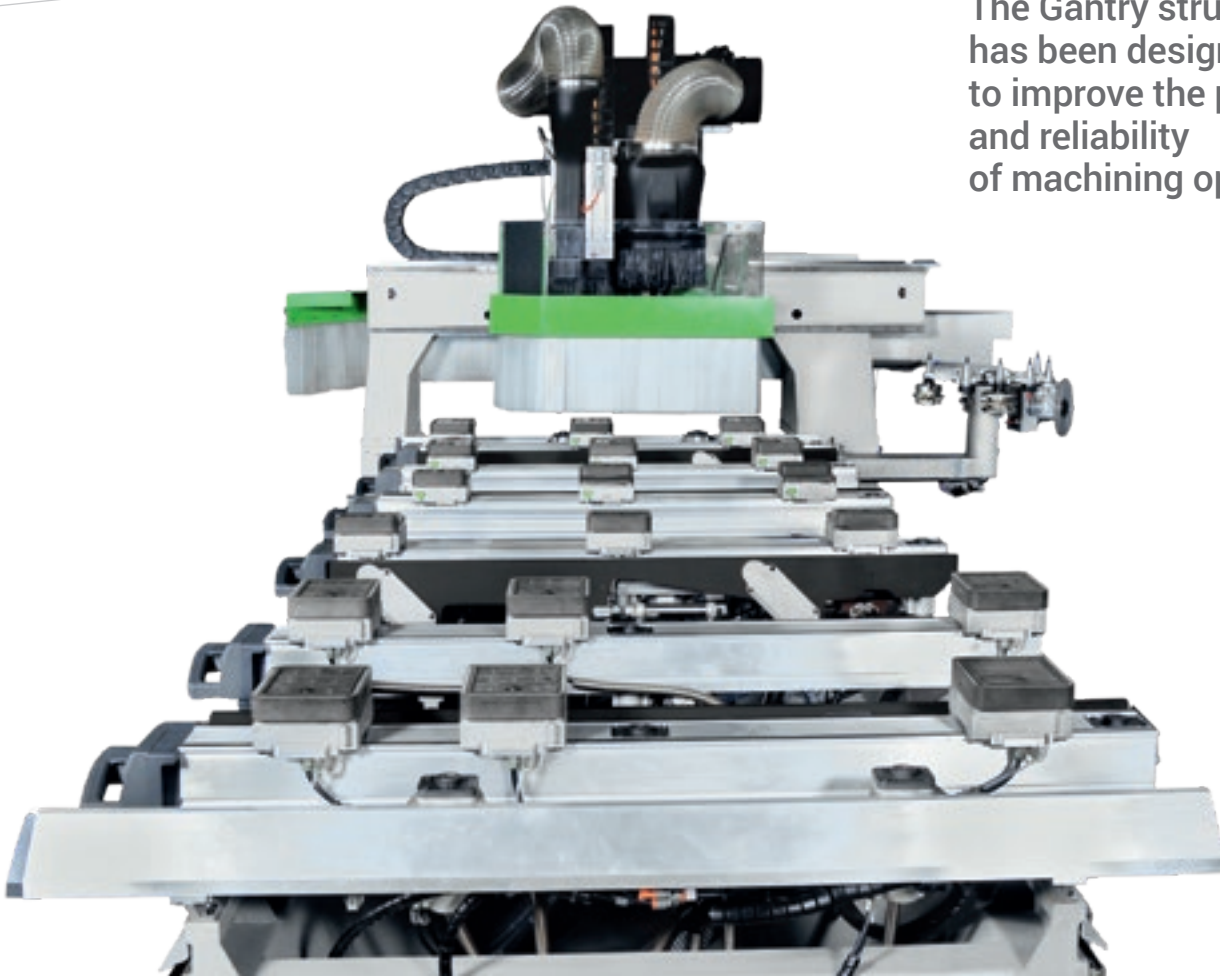
Ergonomic auxiliary **vacuum outlet** for customized jigs.



The **Pick-up station** allows a safe tool change on the electrospindle.

# LONG TERM QUALITY AND RELIABILITY

The Gantry structure has been designed to improve the precision and reliability of machining operations.



Rigidity and absence of vibration ensures consistency in quality of the finished products.



**Automatic lubrication** ensures the continuous lubrication of the machine's main moving parts without the need for operator intervention .

# ROVER TECH NOLO GY

## COMPLETE SOLUTIONS

The high technological content of the machining centres most widely sold in the world meets the requirements of wood industry professionals.

The compact dimensions, the great standard equipment features and the ease of use make Rover Gold G a good investment.





# MAXIMUM OPERATOR SAFETY



The **photocell safety solution** allows maximum use of pendulum working field.



**Remote control** panel for direct and immediate operator control.

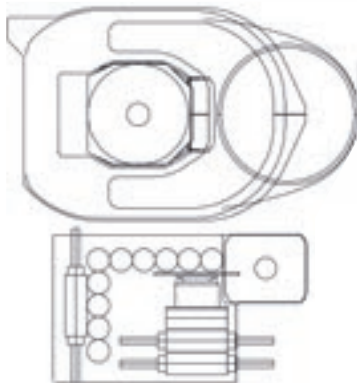
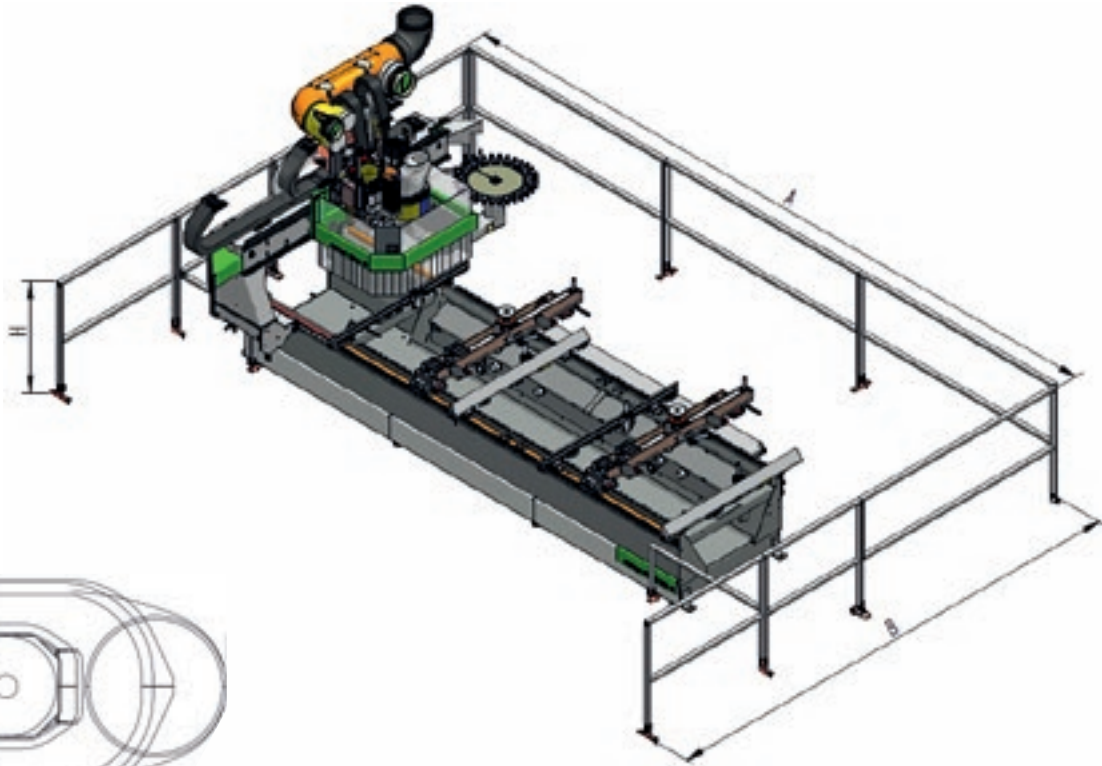


**Side curtain guards** to protect the working unit, which are movable to enable the machine to work at maximum speed in total safety.



PC with Windows real-time operating system and B\_SOLID software interface, including anti-collision system.

# TECHNICAL SPECIFICATIONS



## WORKING UNIT CONFIGURATION

HSK F63 electrospindle, 13.2 kW.  
Boring head BHZ 17 L.

## WORKING FIELD

		X	Y	Z
Rover Gold G 1232	mm/inch	3200/125.9	1260/49.6	165/6.4

## FOOT PRINT

		A	B	H	H MAX
Rover Gold G 1232	mm/inch	6055/238.7	4220/166.1	1000/39.3	2310/90.9

Rover Gold G 1232 X / Y / Z axis speed	m/min foot/min	60/60/20 196.8/196.8/65.6		
--	-------------------	------------------------------	--	--

The technical specifications and drawings are non-binding. Some photos may show machines equipped with optional features. Biesse Spa reserves the right to carry out modifications without prior notice.

The correct noise pressure level, measured from the operator's workstation, is: LP = 78 dB (A), during boring. LP = 78.5 dB (A), during milling.

The noise power level is: LWA = 93.5 dB, during boring. LWA = 95.5 dB, during milling. Uncertainty factor K = 4 dB, measured according to EN ISO 3746 - EN ISO 11202.

The noise levels shown are emission levels and do not necessarily correspond to safe operation levels. Despite the fact that there is a relationship between emission and exposure levels, this may not be used in a reliable manner to establish whether further measures need to be taken. The factors determining the exposure level for the workforce include length of exposure, work environment characteristics, other sources of dust and noise, etc. i.e. the number of other adjoining machines and processes. At any rate, the above information will enable the operator to better evaluate dangers and risks.

# HIGH-TECH BECOMES ACCESSIBLE AND INTUITIVE



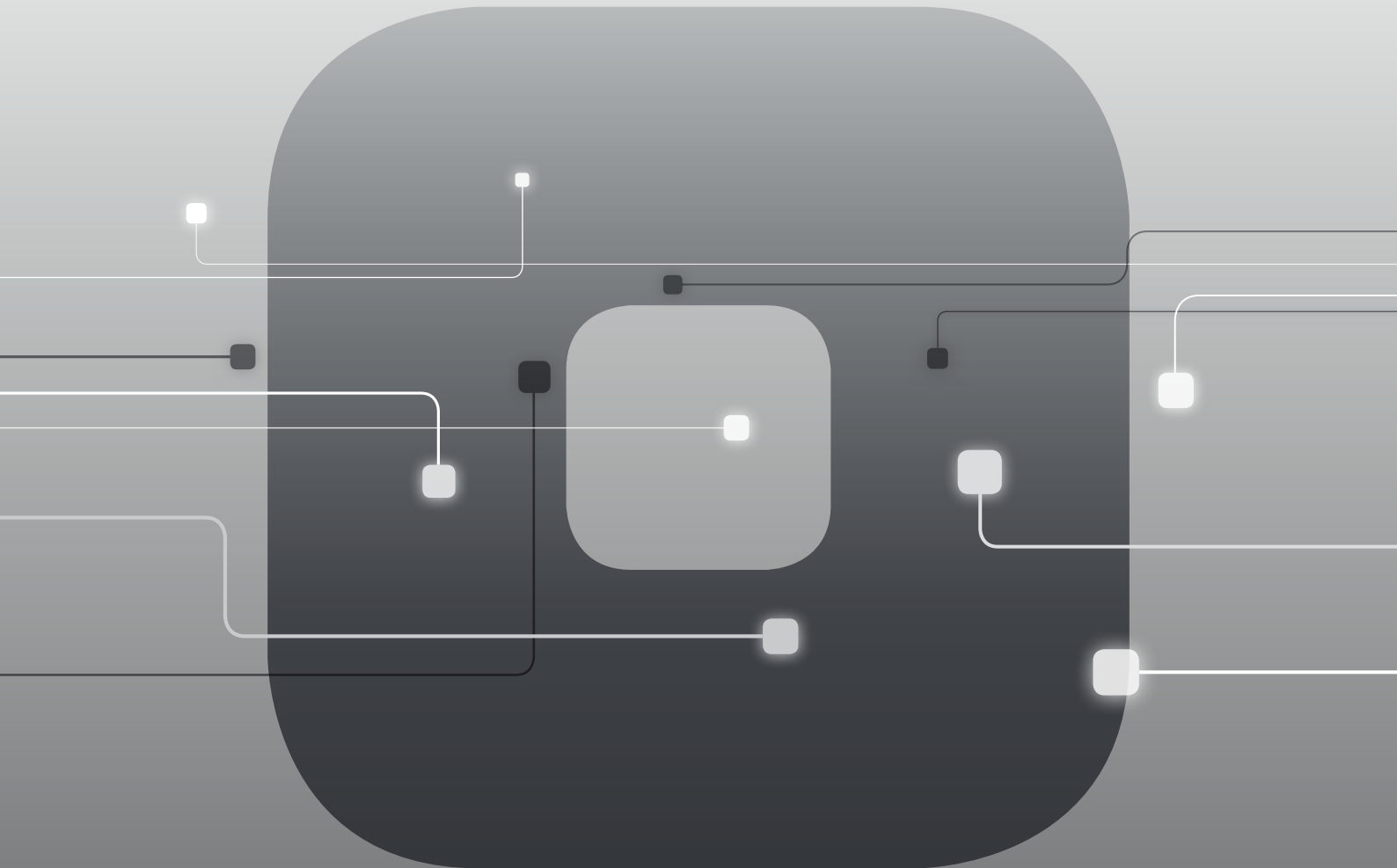
**B\_SOLID IS A 3D CAD CAM SOFTWARE PROGRAM THAT SUPPORTS THE PERFORMANCE OF ANY MACHINING OPERATION THANKS TO VERTICAL MODULES DESIGNED FOR SPECIFIC MANUFACTURING PROCESSES.**

- Planning in just a few clicks.
- Simulating machining operations to visualise the piece ahead of manufacturing and have some guidance for the planning phase.
- Virtual prototyping of the piece to avoid collisions and ensure optimal machine equipment.
- Machining operation simulation with a calculation of the execution time.



# SOPHIA

GREATER VALUE FROM MACHINES



SOPHIA is the IoT platform created by Biesse in collaboration with Accenture which enables its customers to access a wide range of services to streamline and rationalise their work management processes.

It allows alerts and indicators to be sent to the customer in real time, in relation to production, the machines used and the type of process carried out. These are detailed instructions for more efficient use of the machine.

□ **10% CUT IN COSTS**

□ **50% REDUCTION  
IN MACHINE DOWNTIME**

□ **10% INCREASE  
IN PRODUCTIVITY**

□ **80% REDUCTION IN PROBLEM  
DIAGNOSTICS TIME**

**SOPHIA TAKES THE INTERACTION BETWEEN  
CUSTOMER AND SERVICE TO A HIGHER LEVEL.**

**iOT**  
SOPHIA

IoT - SOPHIA provides a comprehensive overview of the specific machine performance features, with remote diagnostics, machine stoppage analysis and fault prevention. The service includes a continuous connection with the control centre, the option of calling for assistance from within the customer app (such calls are managed as priorities), and an inspection visit for diagnostic and performance testing within the warranty period. Through SOPHIA, the customer receives priority technical assistance.

**PARTS**  
SOPHIA

PARTS SOPHIA is the easy new, user-friendly and personalised tool for ordering Biesse spare parts. The portal offers customers, dealers and branches the chance to navigate within a personalised account, consult the constantly updated documentation of the machines purchased, and create a spare parts purchase basket indicating the real time availability in the warehouse and the relative price list. In addition, the progress of the order can be monitored at all times.

 **Biesse**

# CUSTOMER CARE IS WHO WE ARE

**SERVICES** is a new experience for our customers, to offer not just excellent technology but the added value of an increasingly direct connection with the company, the professionals who work there and the experience they embody.



## **ADVANCED DIAGNOSTICS**

Digital channels for remote interaction online 24/7. Always ready to intervene on-site seven days a week.



## **A WORLDWIDE NETWORK**

39 branch offices, over 300 certified agents, retailers in 120 countries, and spare parts warehouses in America, Europe and the Far East.



## **SPARE PARTS AVAILABLE IMMEDIATELY**

Identification, shipping and delivery of spare parts for every need.



## **EVOLVED TRAINING OPPORTUNITIES**

Lots of on-site, online and classroom training modules for personalised growth.



## **VALUABLE SERVICES**

A wide range of services and software packages to help our customers achieve continuous improvements in performance.



## AN EXCELLENT LEVEL OF SERVICE

**+550**

HIGHLY SPECIALISED  
TECHNICIANS AROUND  
THE WORLD, READY TO HELP  
CUSTOMERS WITH EVERY  
NEED

**90%**

OF MACHINE DOWN CASES  
WITH RESPONSE TIME  
UNDER 1 HOUR

**+100**

EXPERTS IN DIRECT  
CONTACT THROUGH  
REMOTE CONNECTIONS  
AND TELESERVICE

**92%**

OF SPARE PARTS ORDERS  
FOR MACHINE DOWNTIME  
PROCESSED WITHIN 24  
HOURS

**+50.000**

ITEMS IN STOCK IN THE  
SPARE PARTS WAREHOUSES

**+5.000**

PREVENTIVE MAINTENANCE  
VISITS

**80%**

OF SUPPORT REQUESTS  
SOLVED ONLINE

**96%**

OF SPARE PARTS ORDERS  
DELIVERED IN FULL ON TIME

**88%**

OF CASES SOLVED WITH  
THE FIRST ON-SITE VISIT

# MADE WITH BIESSE

## BIESSE GROUP TECHNOLOGIES JOIN FORCES WITH LAGO'S INNOVATION AND TOTAL QUALITY MANAGEMENT PROCESSES

In the crowded world of domestic design, Lago takes its place as an emerging brand, thanks to a collection of stimulating products and a corporate philosophy that embraces the interaction between business and art, coupled with on-going research into sustainable development. "We created a number of projects, or rather, concepts - states Daniele Lago - that have shaped Lago as we see it today: we saw design as a cultural vision that applies not only to

individual products, but rather to the entire business chain". "Flexibility is the key word here at Lago" says Carlo Bertacco, Manufacturing Manager. "We started to introduce the concept of processing only outstanding orders, which enabled us to reduce our footprint and empty the site from the very beginning". "The machinery that we purchased - states Bertacco - is great, it entailed a limited investment versus the capabilities it offers and is linked to a specific manu-

facturing approach. What I am talking about is a given manufacturing volume with Lago-standard quality levels and the possibility of customising as late as possible, at the customer's request: in short, the very basic principles of lean manufacturing".

*Source: IDM Industria del Mobile  
Lago, our customer since 1999, is one of most  
prestigious Italian furniture brands in the world.*



Founded in Italy,  
international native.

We are an international company that manufactures integrated lines and machines to process wood, glass, stone, plastic and composite materials and what will come next.

Thanks to our rooted competence nurtured by an ever-growing worldwide network, we support your business evolution – empowering your imagination.

Master of materials, since 1969.

We simplify your  
manufacturing  
process to make  
the potential of  
any material  
shine.



Join the  
Biesse world.

[biesse.com](https://www.biesse.com)



